

POTTER'S


choice

for a reduction look





PC-1  Saturation Metallic



PC-2  Saturation Gold



 PC-4  Palladium



PC-12 Blue Midnight



PC-20 Blue Rutile



PC-21 Arctic Blue



PC-23 Indigo Float



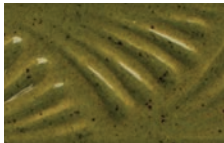
PC-25  Textured Turquoise



PC-27 Tourmaline



PC-28 Frosted Turquoise



PC-29 Deep Olive Speckle



PC-30 Temmoku



PC-31 Oatmeal



PC-32 Albany Slip Brown




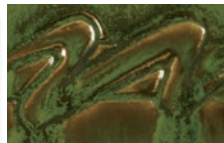
PC-33 Iron Lustre



PC-40  True Celadon



PC-41  Vert Lustre



PC-42  Seaweed




PC-43 Toasted Sage



PC-45  Dark Green



PC-46  Lustrous Jade



PC-52 Deep Sienna Speckle



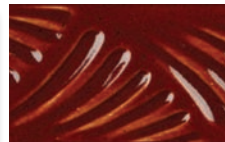
PC-53 Ancient Jasper



PC-55 Chun Plum



PC-57 Smokey Merlot



PC-59 Deep Firebrick



PC-60 Salt Buff



PC-34
Light Sepia



PC-35
Oil Spot



PC-36
Ironstone



PC-37
Smoked Sienna



PC-39
Umber Float

Salsa bowl: PC-33
Iron Lustre over
PC-25 Textured
Turquoise on
AMACO® 46-M Buff
Stoneware Clay



PC-48
Art Deco Green



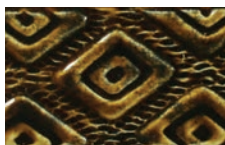
PC-49
Frosted Melon



PC-50
Shino



PC-61
Textured Amber



PC-62
Textured Amber
Brown

Available in
**DIPPING
BUCKETS**

All Potter's Choice
glazes except for
PC-2 Saturation Gold



AP Colors Safe for Spray Application**

** Except PC-29 Deep Olive Speckle, PC-52 Deep
Sienna Speckle, and PC-59 Deep Firebrick