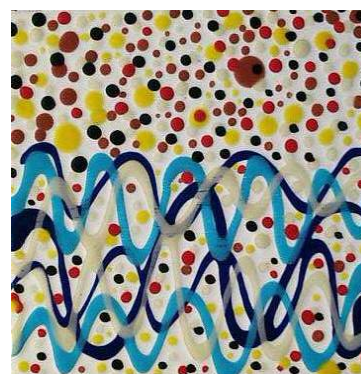
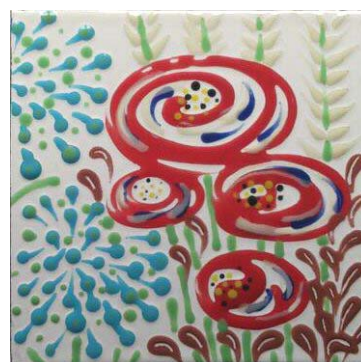


Enamel Pens

Milton Bridge Enamel Pens are an easy to use range of colours that you can use to paint or draw on metal – allowing you to embellish your design and add fine details that would be difficult to achieve otherwise.

Top Tips

- The pens need to be shaken vigorously before use to ensure full mixing of the enamel and medium.
- Designs need to be left to dry on the kiln top before firing, similar to using other liquid enamel.
- The pens can be used over leaded or lead free enamel, liquid or powder enamel and on copper or enamel grade steel.
- The colours are also intermixable allowing you to produce tints, shades and secondary colours.
- It is important not to apply the enamel too thickly or it will pull apart
- Once the marks you've made with the pens are dry it is possible to work back into them with a stylus or cocktail stick to alter the marks by scratching areas away.
- As with most enamels it is better to fire between each layer of colour.



Milton Bridge Ceramic Colours Ltd. Unit 9, Trent Trading Park, Botteslow Street, Hanley,
Stoke – on – Trent, Staffordshire, ST1 3LY, United Kingdom

(t): +44 (0)1782 274229 (f): +44 (0)1782 281591 (e): djb@milton-bridge.co.uk (w): www.milton-bridge.co.uk